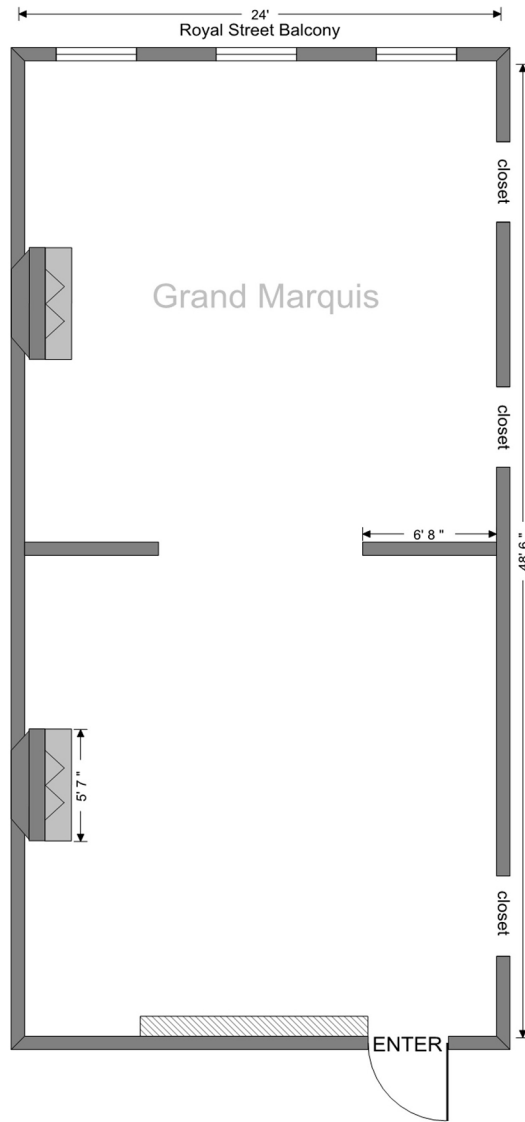


PRIVATE DINING ROOM SPECIFICATIONS

Four unique spaces,
one classic New Orleans venue
in the heart of the French Quarter.

Grand Marquis Ballroom | Royal Court Dining Room | The Terrace Dining Room | The Courtyard



THE GRAND MARQUIS BALLROOM

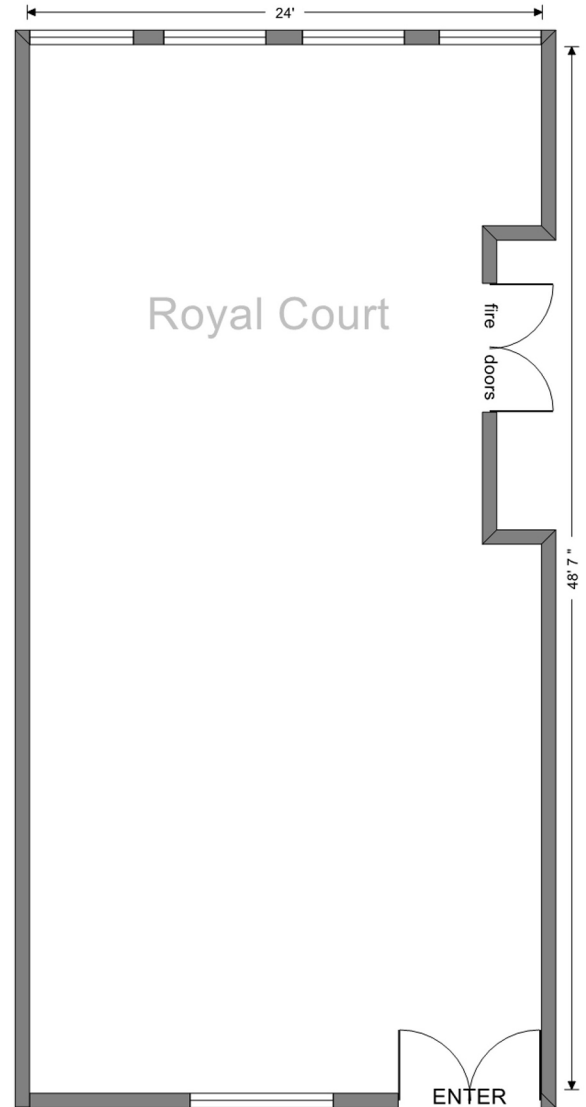
Location: Second Floor
Accessible only by staircase

Dimensions: 24' x 48.5'

Capacity Seated: 90 guests

Capacity Reception: 120 guests

PRIVATE DINING ROOM SPECIFICATIONS



THE ROYAL COURT
DINING ROOM

Location: First Floor
Handicap Accessible

Dimensions: 24' x 48.7'

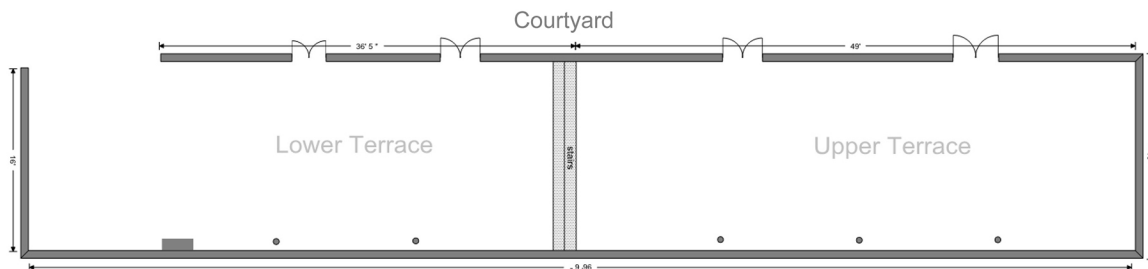
Capacity Seated: 90 guests

Capacity Reception: 120 guests

Wedding/Social Sales - Raven Ousley
rousley@courtoftwosisters.com | 504-522-7261 ext. 13

Corporate/Meeting/Tour Sales - Sherry Constance
sconstance@courtoftwosisters.com | 504-522-7261 ext. 24

PRIVATE DINING ROOM SPECIFICATIONS



THE TERRACE DINING ROOM

THE OUTDOOR COURTYARD

Location: First Floor
Split Level/Two steps in the middle

Dimensions: 18' x 96.5'

Capacity Seated: 150 guests

Capacity Reception: 175 guests

Location: First Floor
Handicap Accessible

Dimensions: 55' x 62'

Capacity Seated: 240 guests

Capacity Reception: 250 guests

Upper Terrace Only: 65 guests
Courtyard & Terrace: 300 guests
Entire First Floor: 600 guests
Entire Restaurant: 700-1000 (Depending on Weather & Flow)

Wedding/Social Sales - Raven Ousley
rousley@courtoftwosisters.com | 504-522-7261 ext. 13

Corporate/Meeting/Tour Sales - Sherry Constance
sconstance@courtoftwosisters.com | 504-522-7261 ext. 24