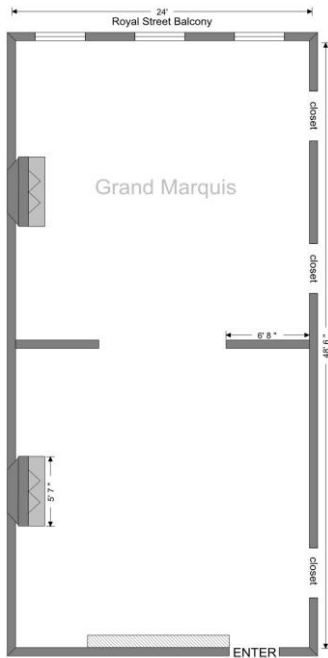


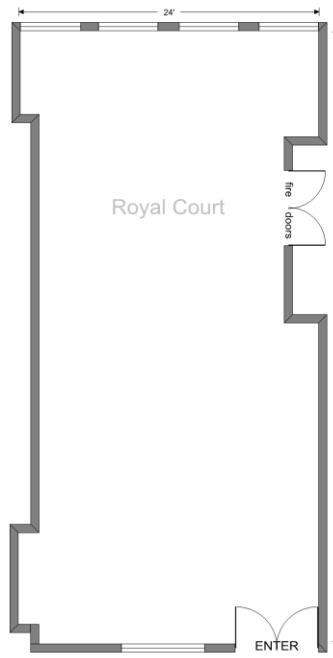
The Court of Two Sisters

- Private Room Specifications -



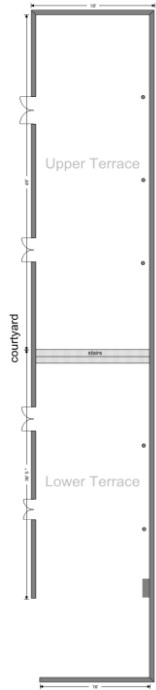
Grand Marquis Ballroom

Location: Second Floor
 Accessible only by staircase
 Dimensions: 24' x 48.5'
 Capacity Seated: 90
 Capacity Reception: 120



Royal Court Dining Room

Location: First Floor
 Handicap Accessible
 Dimensions: 24' x 48.7"
 Capacity Seated: 90
 Capacity Reception: 120



Terrace Dining Room

Location: First Floor
 Split Level/Two Stairs
 Dimension: 18' x 96.5'
 Capacity Seated: 150
 Capacity Reception: 175



Outdoor Courtyard

Location: First Floor
 Handicap Accessible
 Dimensions: 55' x 62'
 Capacity Seated: 240
 Capacity Reception: 250
Entire Restaurant
 Capacity Reception: 700-1000 depending on weather & flow

Upper Terrace Only

Capacity Seated: 65
Courtyard & Terrace
 Capacity Reception: 300
Entire First Floor
 Capacity Reception: 600